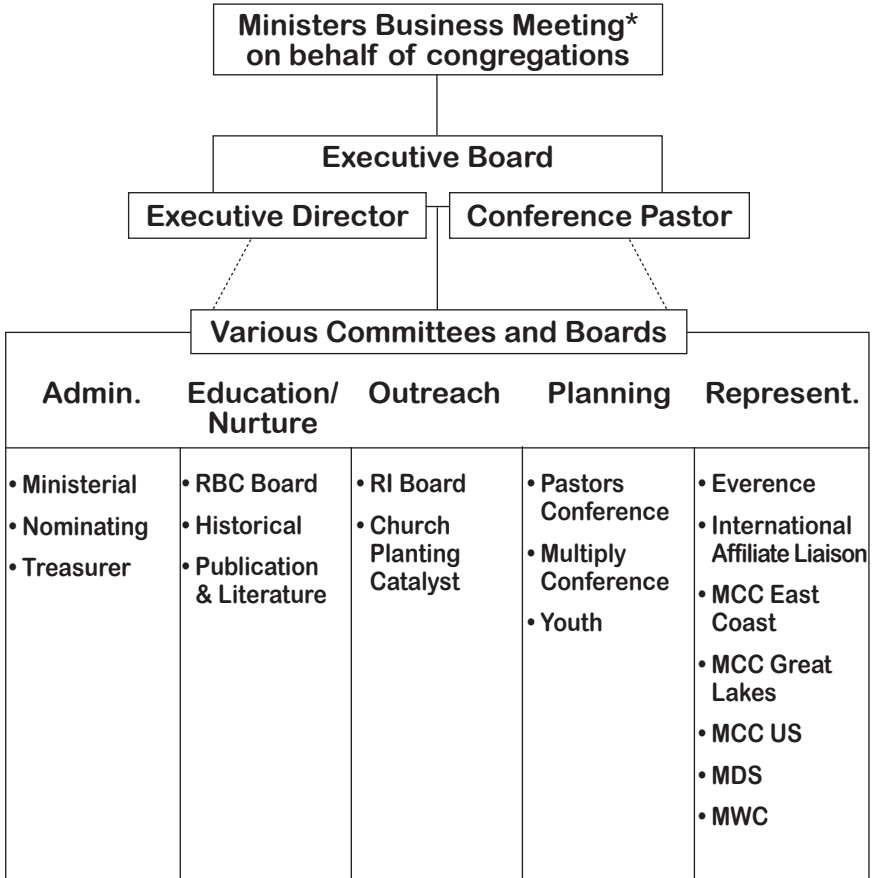


Organizational Flow Chart



*The Ministers Business Meeting is held semi-annually in February and July/August. Ordained Rosedale Network ministers vote. The Conference structure and voting eligibility are based on ministerial membership and presence, rather than on calculated congregational representation. The Rosedale Network of Churches Constitution provides for both ministerial and congregational membership and accountability, but the greater focus is on the ministerial level. Congregations are represented by their ordained pastors and overseers.

Key to Acronyms

MCC - Mennonite Central Committee
MDS - Mennonite Disaster Service
MWC - Mennonite World Conference

RBC - Rosedale Bible College
RI - Rosedale International